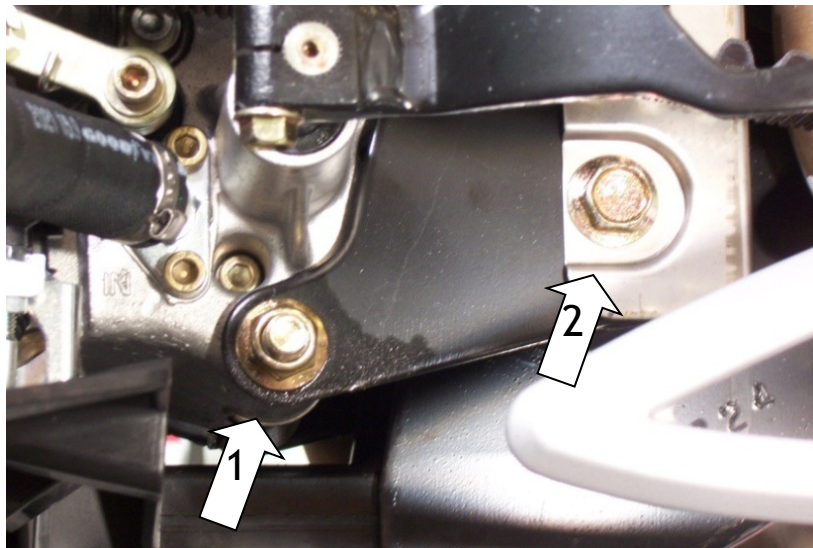


ISCI SPYDER FLOORBOARDS

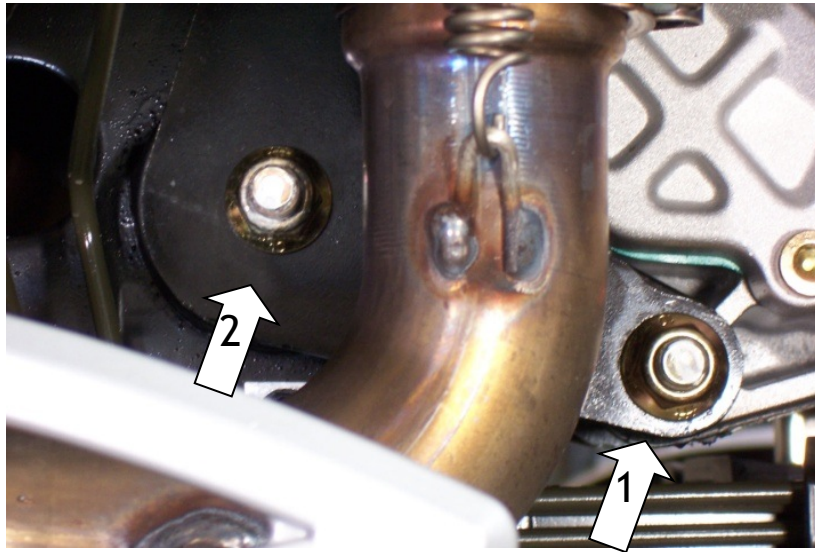
INSTALLATION INSTRUCTIONS

Great care has gone into providing complete and thorough installation instructions. Use the torque values listed on the Assembly Drawing when tightening all fasteners. Use the supplied Loctite on all fasteners that do not have any mechanical locking device. See terms and conditions located at the end of this document.

1. Ensure that all parts and the proper quantities of parts that are listed in the Parts List on the Assembly Drawing are in the package.
2. Refer to Spyder Shop Manual and remove all side body panels, Middle, Upper and Lower from both sides.
3. Remove Engine Support Bolts labeled "1" and "2" as shown in the pictures below. Bolt "1" is a short bolt and there is one bolt on each side. Bolt "2" is a long bolt that goes all the way through to the other side. Replace the short hex head bolts with the longer 10mm X 75mm hex head bolts (Item #4, page 10). There is a hex shaped pocket in the engine block that the head of these bolts fit into. Be sure that the bolts are seated in this pocket. Also replace the long bolt with the 3/8-16 X 9" hex head bolt (Item #3, page 10) as you are installing the brackets with a 3/8" washer (Item #6, page 10) under the head.

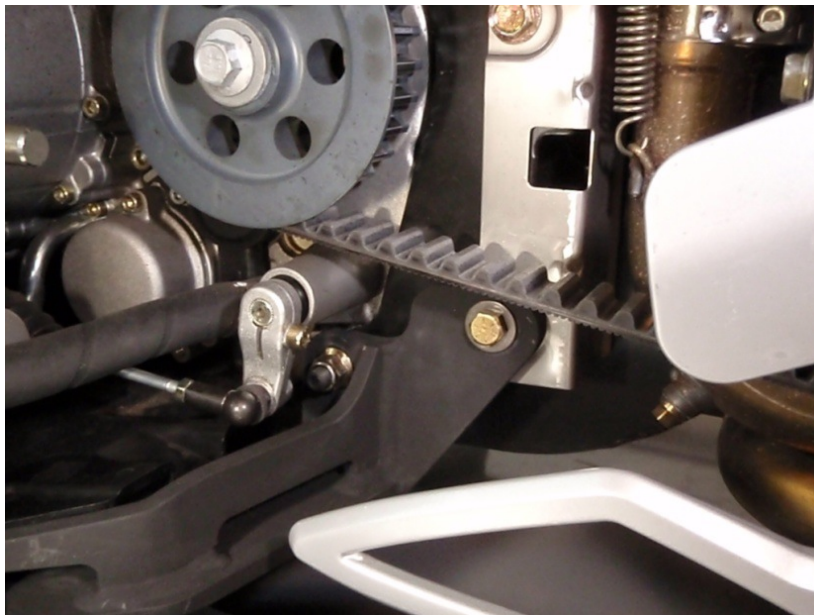


LEFT SIDE

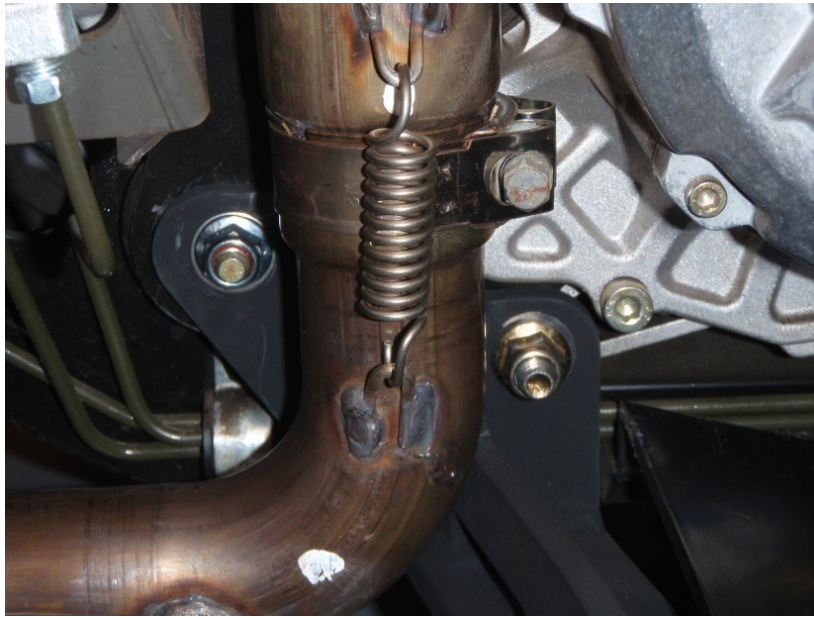


RIGHT SIDE

4. Place the right hand and left hand Bracket Assemblies (Items #1 and #2, page 10) into position on the newly installed bolts. Reuse the original two 10mm locking nuts and the 3/8-16 flanged nut (Item #5, page 10) that is supplied. Proper installation should look like the following photos. The mounting holes in the brackets are oversized to allow for adjustment. Do not tighten these bolts at this time, leave them loose until AFTER the floorboards have been installed.

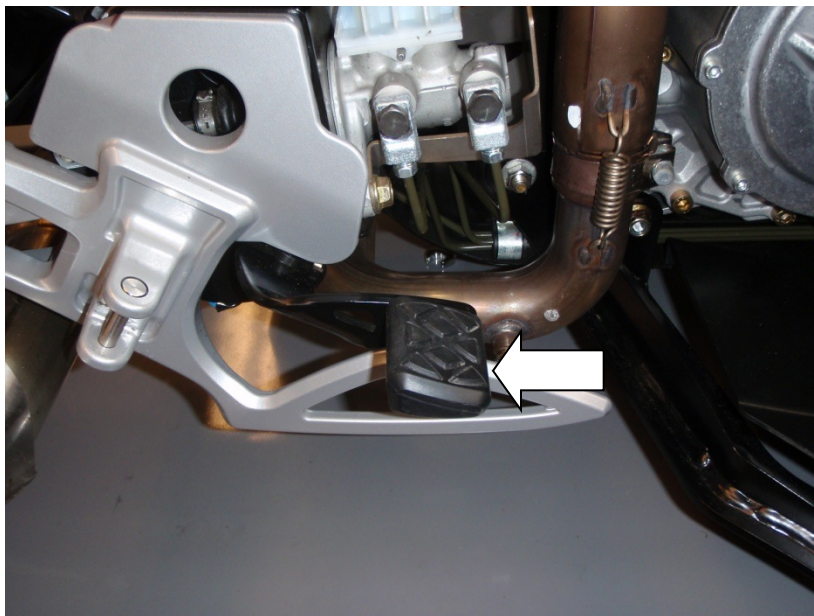


LEFT SIDE



RIGHT SIDE

5. Remove the rider footpeg by removing the E-clip from the pin that is holding it in. Save the pin and E-clip as they will be used for the installing the floorboard.
6. Remove the rubber pad from the brake pedal.





7. This next step requires using a cut-off wheel on a grinder and some grinding to smooth the brake lever. Be sure to cover the Spyder appropriately so that grinding dust doesn't get on any painted surfaces or in any of the exposed internal areas.



8. Using a cut-off wheel on the grinder, carefully cut the brake pedal support off of the brake lever. After removing the brake pedal support, use a grinder to smooth any of the brake pedal support and the weld that is remaining so that the brake lever is smooth.

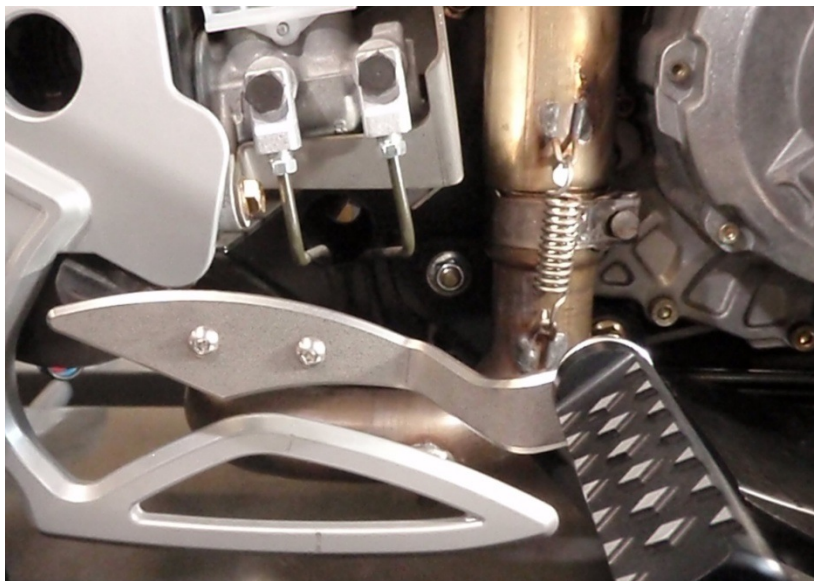
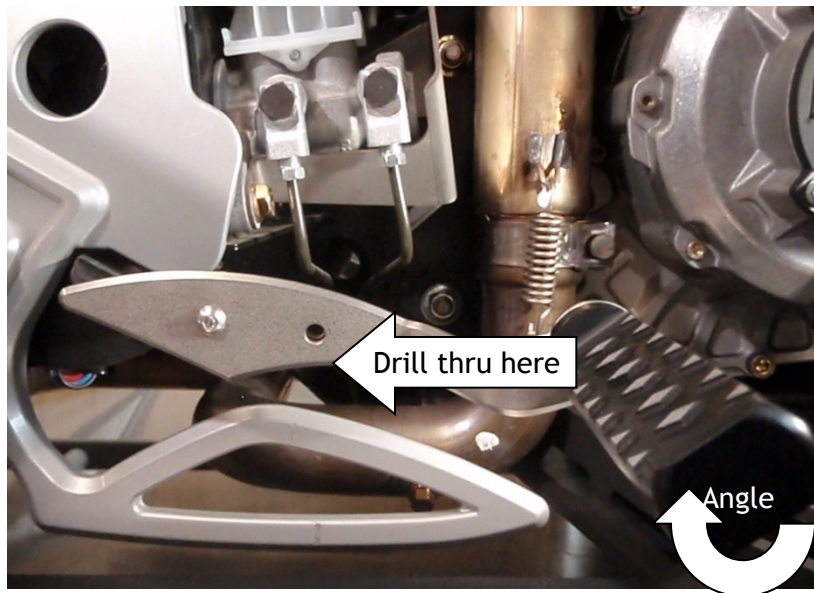




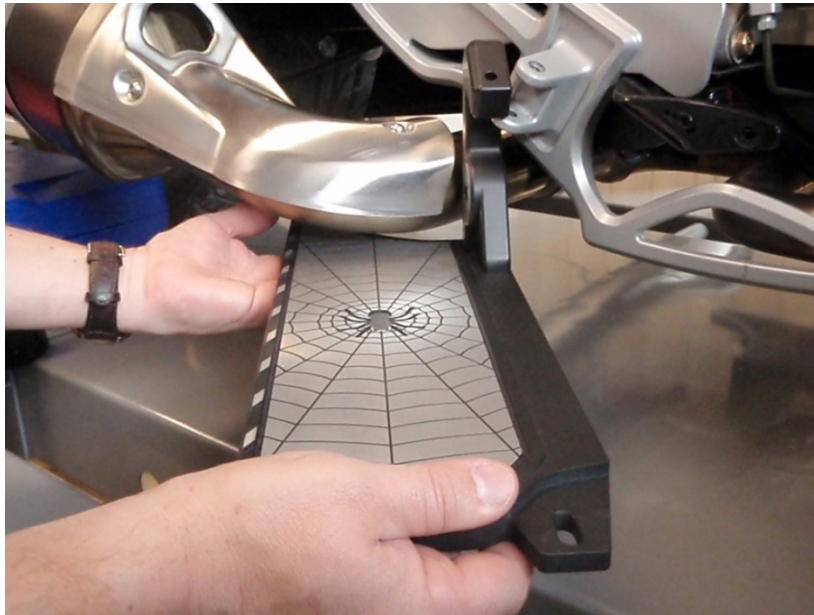
9. Keep everything covered and spray paint the exposed metal on the lever black.



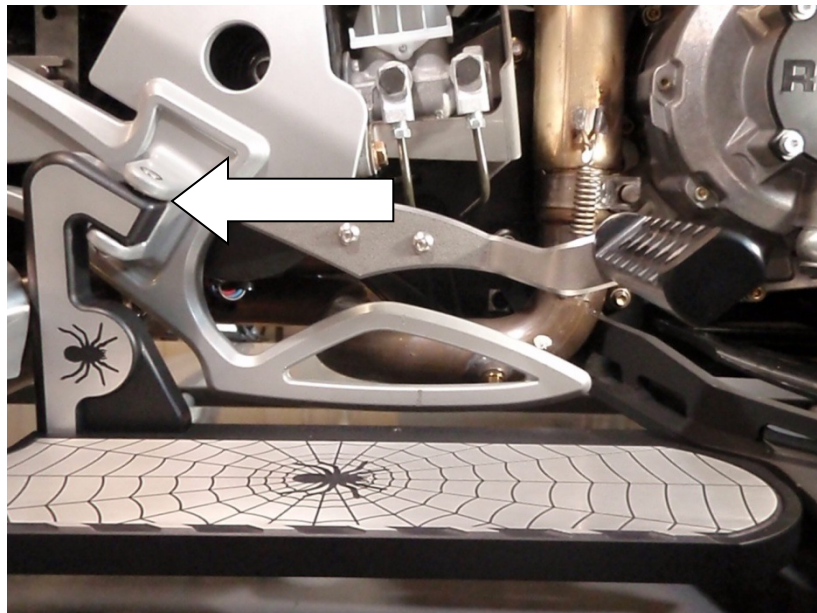
10. Bolt the Brake Pedal (Item #1, page11) to the Brake Lever Extension (Item #3, page 11) using the 3/8-16 BHCS (Item #5, page11). Adjust rotation angle of Brake Pedal to an angle that will suit you.
11. Bolt the Brake Lever Extension (Item #3, page 11) with a single 5/16" X 7/8" BHCS, 5/16" Washer and 5/16" Nut Plate (Items #4, #6 and #2, page 11) through the rear hole of the Brake Lever Extension and through the triangle shaped hole in the brake lever. Center the OEM brake lever behind the Brake Lever Extension to establish the front hole location to be drilled and tighten securely as shown below. Using the Brake Lever Extension as a guide, drill a 5/16" diameter hole through the OEM brake lever. Now the other 5/16" X 7/8" BHCS and 5/16" Washer (Items #4, and #6) can be installed and tightened into the Nut Plate.



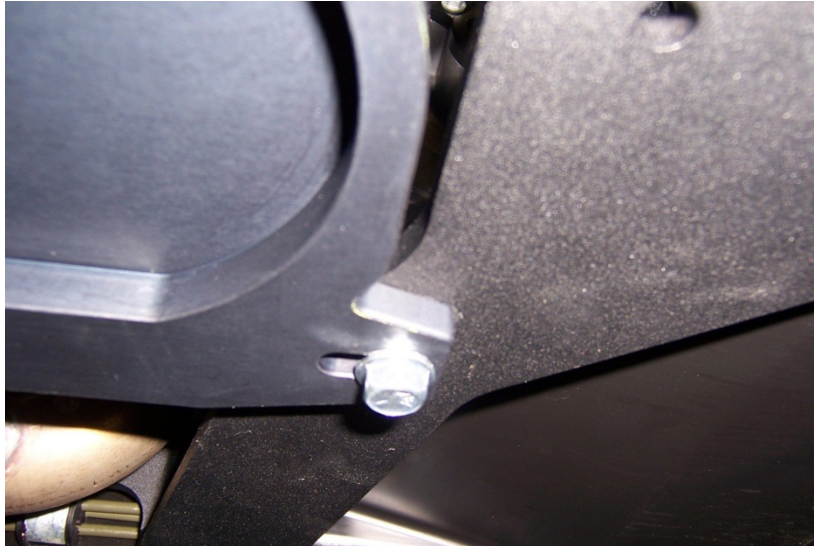
12. To install the Floorboards first assemble Floorboard Bracket (Item #1, page 12) and Floorboard (Item #3, page 12) together with 2 5/16-18 X 7/8" SHCS (Item #7, page 12) and Floorboard Bracket LH (Item #2, page 12) and Floorboard LH (Item #4, page 12) together with 2 5/16-18 X 7/8" SHCS (Item #7, page 12). On the right side hold the floorboard assembly at approximately 45 degrees and slide between the footpeg bracket and the exhaust heat shield as shown in the photo below.



Now rotate the front of the floorboard assembly in and under the Bracket Assembly (Item #1). Insert Wave Washer (Item #6, page 12) between the top of Floorboard Bracket and the bottom of the upper rider peg bracket. Then insert the pin that held the rider footpeg back into the hole it came out of through the Wave Washer and Floorboard assembly and reinstall the E-clip.

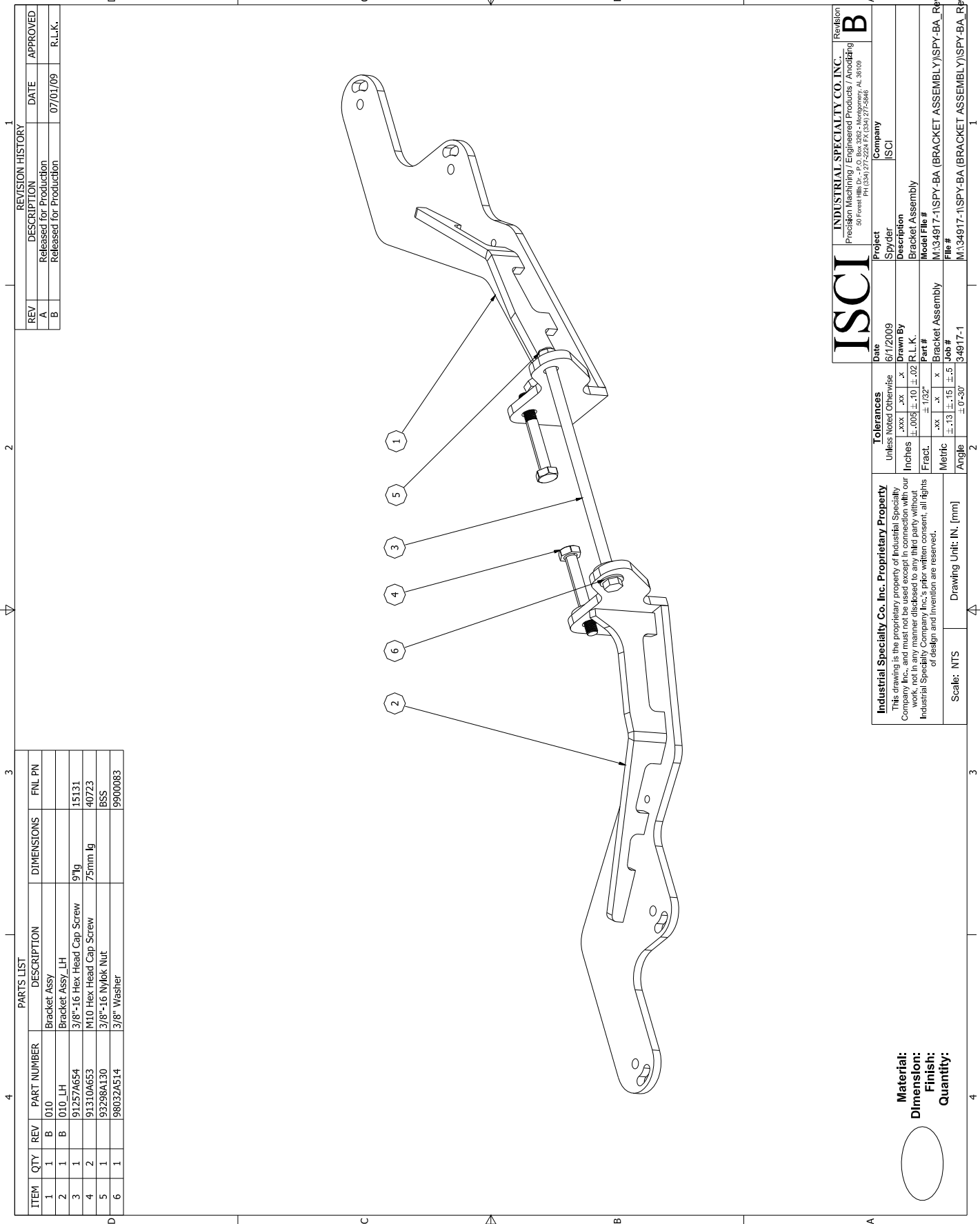


13. Install the 5/16"-18 Hex Flanged Cap Screw (Item #5, page 12) through the slot at the front of the Floorboard (Item #3, page 12) and into the tapped hole on the bottom side of the Bracket Assembly (Item #2, page 10) and tighten completely. Repeat the process for the left hand Floorboard.



14. At this point the 2-10mm and the 1-3/8-16 bolts that are used to attach the Bracket Assemblies (Items #1 and #2, page 10) can be tightened.
15. Now the side body panels, Middle, Upper and Lower from both sides can be reinstalled. You will need to push down on the brake lever when installing the right side Lower body panel to clear the Brake lever extension.
16. Installation is now complete.

If you are having trouble with any part of this installation please give us a call at 334-277-2224 & ask for Jeff Kranzusch or Robert Kawzinski.



REVISION HISTORY			
REV	DESCRIPTION	DATE	APPROVED
A	Released for Production	07/01/09	R.L.K.
B	Released for Production		

PARTS LIST			
ITEM	QTY	REV	PART NUMBER
1	1	B	010
2	1	B	010_LH
3	1		91257A654
4	2		91310A653
5	1		93298A130
6	1		98032A514

DESCRIPTION		DIMENSIONS		FNL PN	
Bracket Assy					
Bracket Assy_LH					
3/8"-16 Hex Head Cap Screw		9"lg		15131	
M10 Hex Head Cap Screw		75mm lg		40723	
3/8"-16 Nylok Nut				BSS	
3/8" Washer				9900083	

ISCI

INDUSTRIAL SPECIALTY CO. INC.

Precision Machining / Engineered Products / Anodizing

50 Forest Hills Dr., P.O. Box 3202 • Montgomery, AL 36109

PH (334) 272-2211 FAX (334) 272-5846

Revision
B

Date	6/11/2009	Project	Spyder
Drawn By	R.L.K.	Description	Bracket Assembly
Part #		Model File #	M134917-1
Bracket Assembly		File #	
Job #	34917-1		

Industrial Specialty Co. Inc. Proprietary Property		Tolerances	
This drawing is the proprietary property of Industrial Specialty Company Inc., and must not be used except in connection with our work, not in any manner disclosed to any third party without Industrial Specialty Company Inc.'s prior written consent. All rights of design and invention are reserved.		Unless Noted Otherwise	
		Inches	.xxx .xx .x ±.005 ±.10 ±.02
		Fract.	± 1/32"
		Metric	±.13 ±.15 ±.5
Scale: NTS	Drawing Unit: IN. [mm]	Angle	± 0°-30°

Material:
Dimension:
Finish:
Quantity:

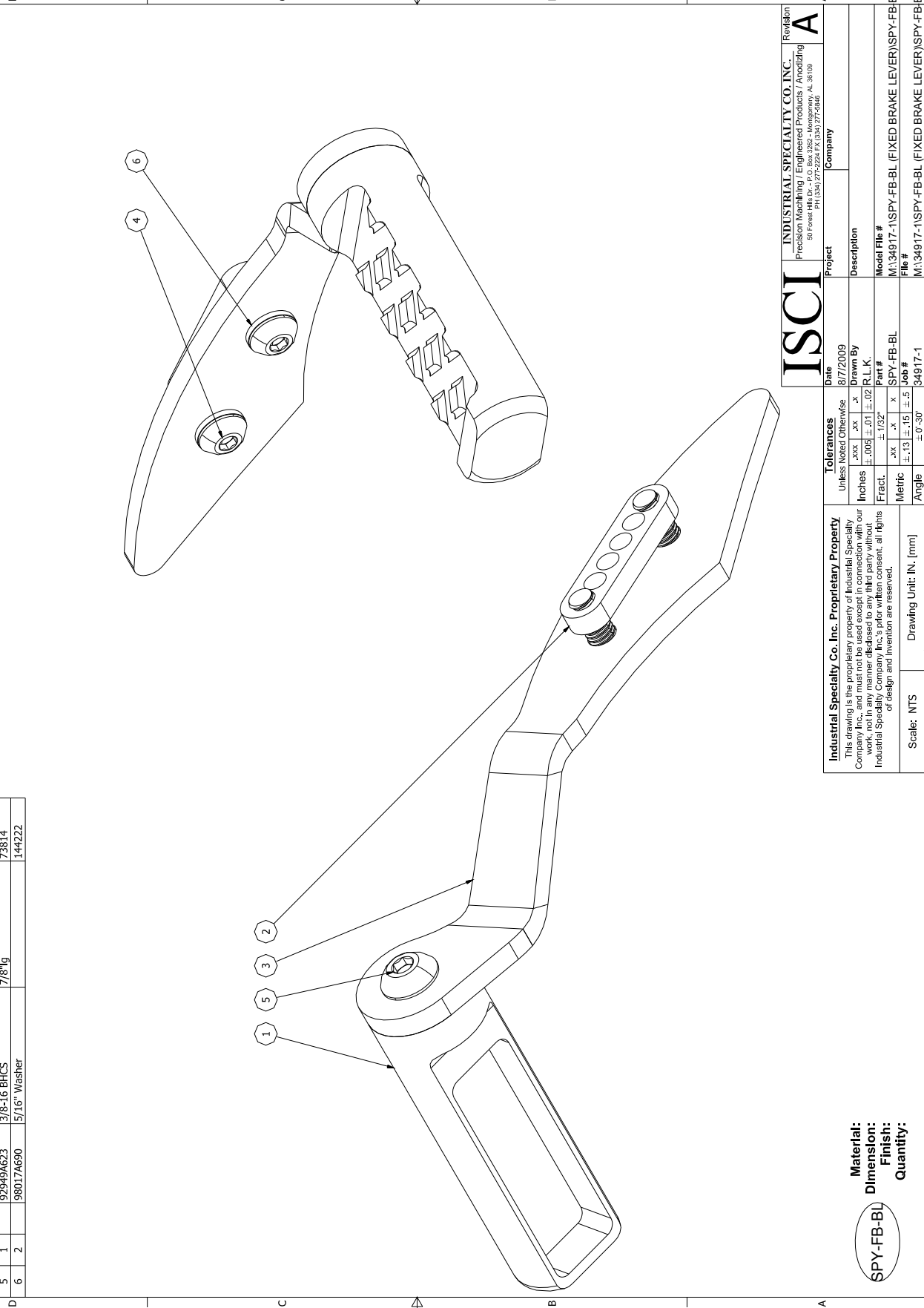
1

2

3

4

PARTS LIST				REVISION HISTORY			
ITEM	QTY	REV	PART NUMBER	DESCRIPTION	DIMENSIONS	FNL PN	
1	1	B	212 RevB	Brake Pedal	1-1/4" Dia. X 3-7/8"		
2	1	A	214	5/16"-18 Nut Plate	1/4" X 1/2" X 1-7/8"		
3	1	B	607 RevB	Brake Lever Extension	1/4" X 1-3/4" X 8-13/16"		
4	2		92949A583	5/16"-18 BHCS	7/8"lg	0171291	
5	1		92949A623	3/8-16 BHCS	7/8"lg	73814	
6	2		98017A690	5/16" Washer		144222	



Material:
Dimension:
Finish:
Quantity:

SPY-FB-BL

Industrial Specialty Co. Inc. Proprietary Property				Tolerances				Project			
This drawing is the proprietary property of Industrial Specialty Company Inc., and must not be used except in connection with our business without the written consent of Industrial Specialty Company Inc. All rights of design and invention are reserved.				Unless Noted Otherwise				Date			
				Inches				8/7/2009			
				Fract.				Drawn By			
				Metric				R.L.K.			
				Angle				Part #			
				Scale: NTS				SPY-FB-BL			
				Drawing Unit: IN. [mm]				Job #			
								34917-1			
								Model File #			
								M:\34917-1\SPY-FB-BL (FIXED BRAKE LEVER)\SPY-FB-BL.lai			
								File #			
								M:\34917-1\SPY-FB-BL (FIXED BRAKE LEVER)\SPY-FB-BL.lai			

ISCI INDUSTRIAL SPECIALTY CO. INC. Revision
Precision Machining / Engineered Products / Anodizing
30 Power Pk (334) 277-2224 FX (334) 277-5846
AL 36108

REV	DESCRIPTION	DATE	APPROVED
A	Released for Production	08/07/09	

INCLUSIVE IN RELATION TO THE LIABILITY OF ISCI (SELLER).