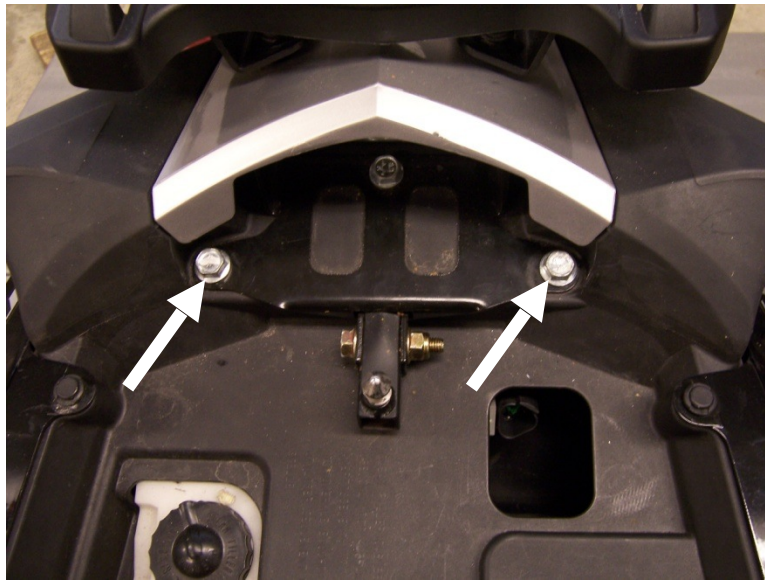


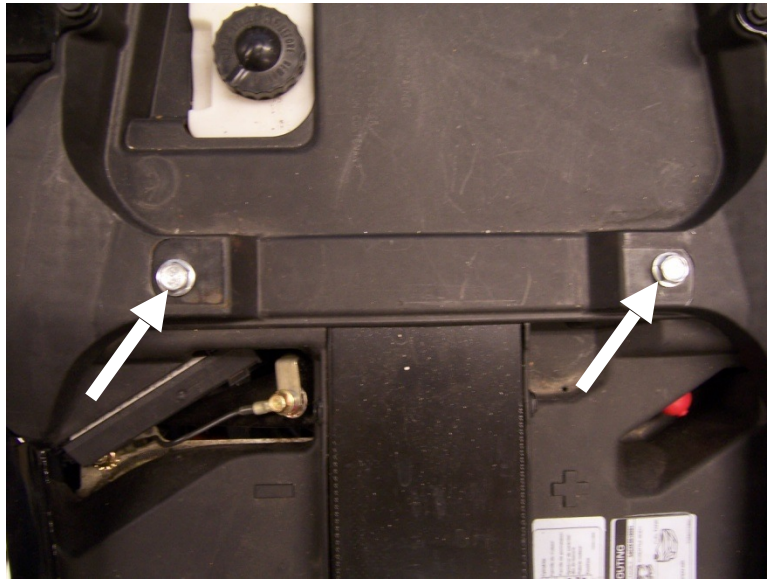
INSTALLATION INSTRUCTIONS

ISCI SPY-ARM-ADJ SPYDER ARM REST

Great care has gone into providing complete and thorough installation instructions. Use the torque values listed on the Assembly Drawing when tightening all fasteners. Use the supplied Loctite on all fasteners that do not have any mechanical locking device. See terms and conditions located at the end of this document.

1. Ensure that all parts and the proper quantities of parts that are listed in the Parts List on the Assembly Drawing are in the package. Some of these items are pre-assembled.
2. These armrests will work with or without GIVI Saddlebags installed.
3. Remove the seat.
4. In the area under the passenger part of the seat there are 4 bolts that the brackets attach to as shown in the following pictures. If you have GIVI Saddlebags installed, go to page 6.

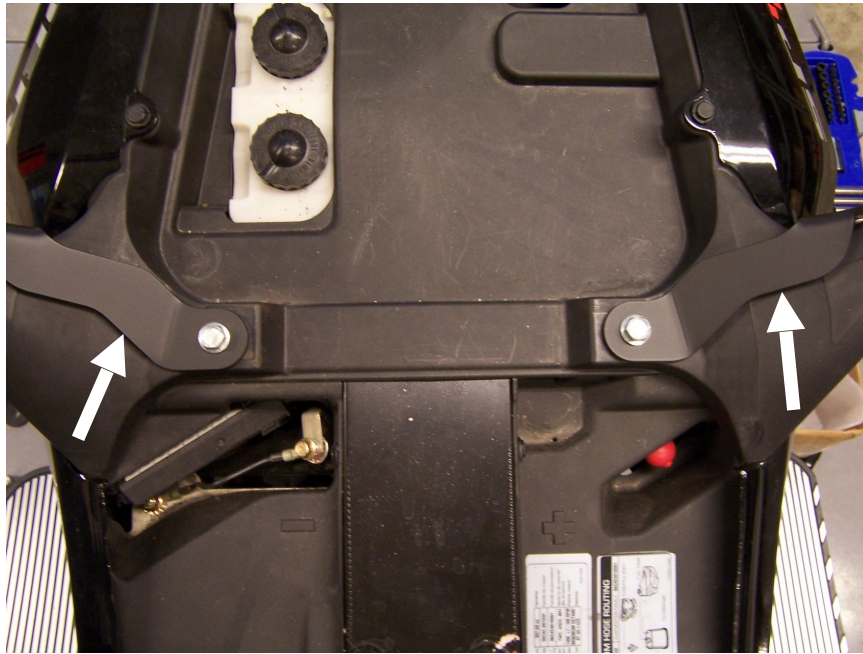




5. Remove each bolt individually and place Forward and Rear Underseat Brackets as shown in the following pictures.
DO NOT TIGHTEN THESE BOLTS AT THIS TIME.



Rear Underseat Brackets



Forward Underseat Brackets

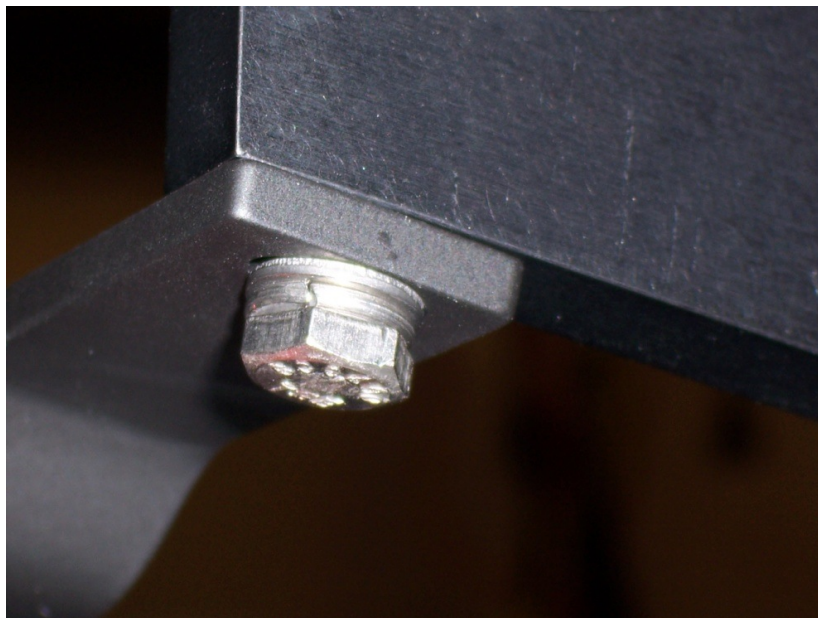
6. Now you will attach each Armrest Assembly to the brackets as shown in the following picture. **DO NOT TIGHTEN ANY BOLTS UNTIL ALL OF THEM HAVE BEEN INSTALLED.**



7. Each Armrest Upright (Items #8 and #9) has a Rubber Bumper (Item #28) installed on one side. These bumpers face the outside of the Spyder. Shown in the following picture is the left Armrest Assembly.



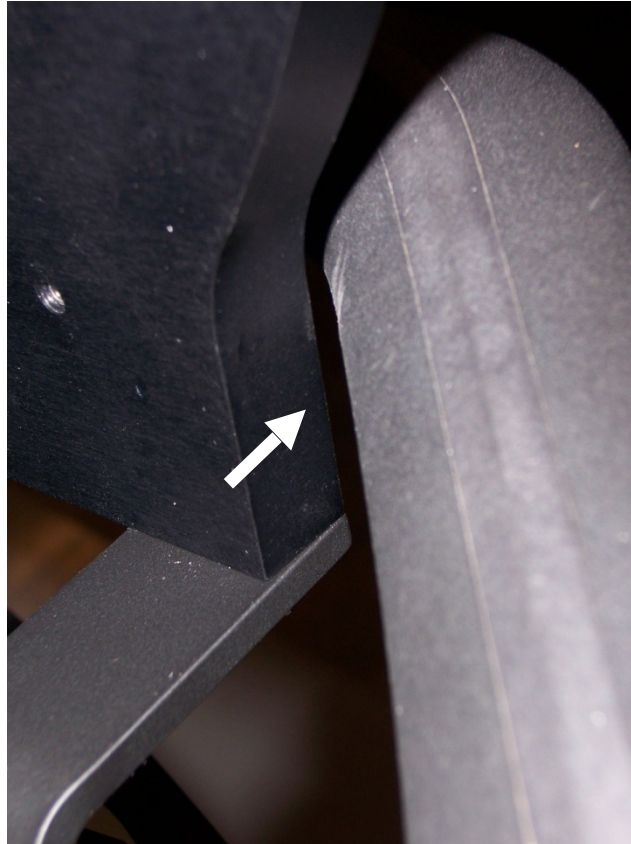
8. Install a $\frac{1}{4}$ "-20 X $\frac{3}{4}$ " (Item #25) through the Rear Underseat Bracket and into the bottom of the Armrest Upright as shown in the following picture. DO NOT TIGHTEN!



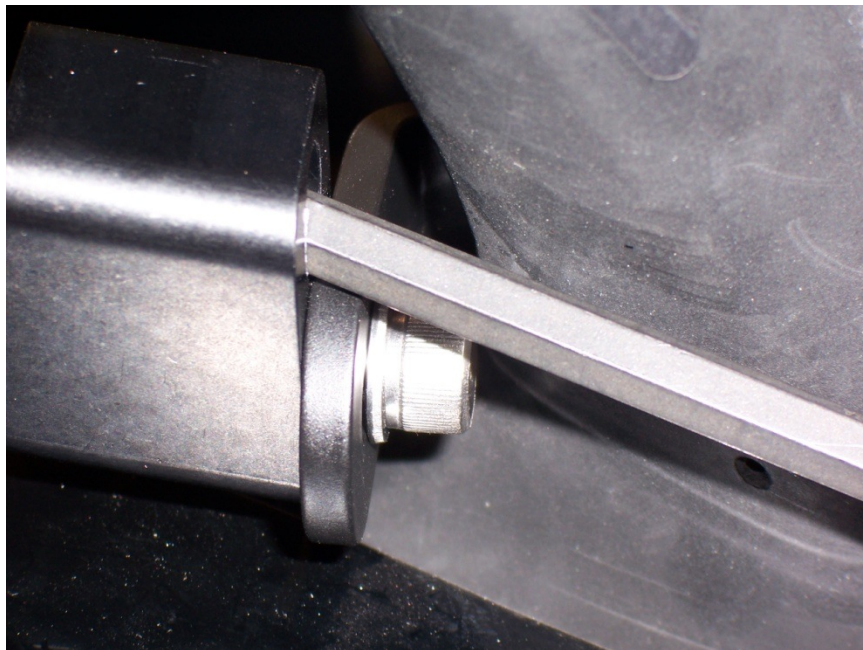
9. Each side will have a Transition Block (Item #7) loosely attached to the Armrest Uprights (Items #8 and #9). Remove this bolt (Item #24) and apply Loctite then reattach. Insert $\frac{5}{16}$ "-18 X $\frac{5}{8}$ " SHCS (Item #23) through $\frac{5}{16}$ " Washer

(Item #29) through the Forward Underseat Bracket and into the tapped hole in the Transition Block. DO NOT TIGHTEN!

10. Ensure that corner of the Armrest Uprights (Items #8 and #9) aren't resting against the inside of the hand holds as shown below.



11. Now the bolts can be tightened up. The two 5/16"-18 SHCS are to be tightened with the supplied Allen wrench as shown in the two pictures below.



12. Tighten all remaining bolts under the seat. Reinstall the seat and the installation is complete.
13. When you have the height adjusted to the level that you like, be sure to add Loctite to the screws (Item #27) and tighten securely.

If for some reason you are having trouble with any part of this installation please do not hesitate to give us a call at 334-277-2224. Ask for Jeff Kranzusch or Robert Kawzinski.

This section is if you have GIVI Saddlebags installed.

14. If you already have the GIVI Saddlebags installed you will use the Forward Underseat Brackets that GIVI uses. Just loosen the bolts that hold them under the seat for now.



15. The Rear Underseat Bracket is placed on top of the GIVI Bracket. Remove the bolt holding it in place and replace with 8mm X 55mm SHCS (Item #17) as shown below.



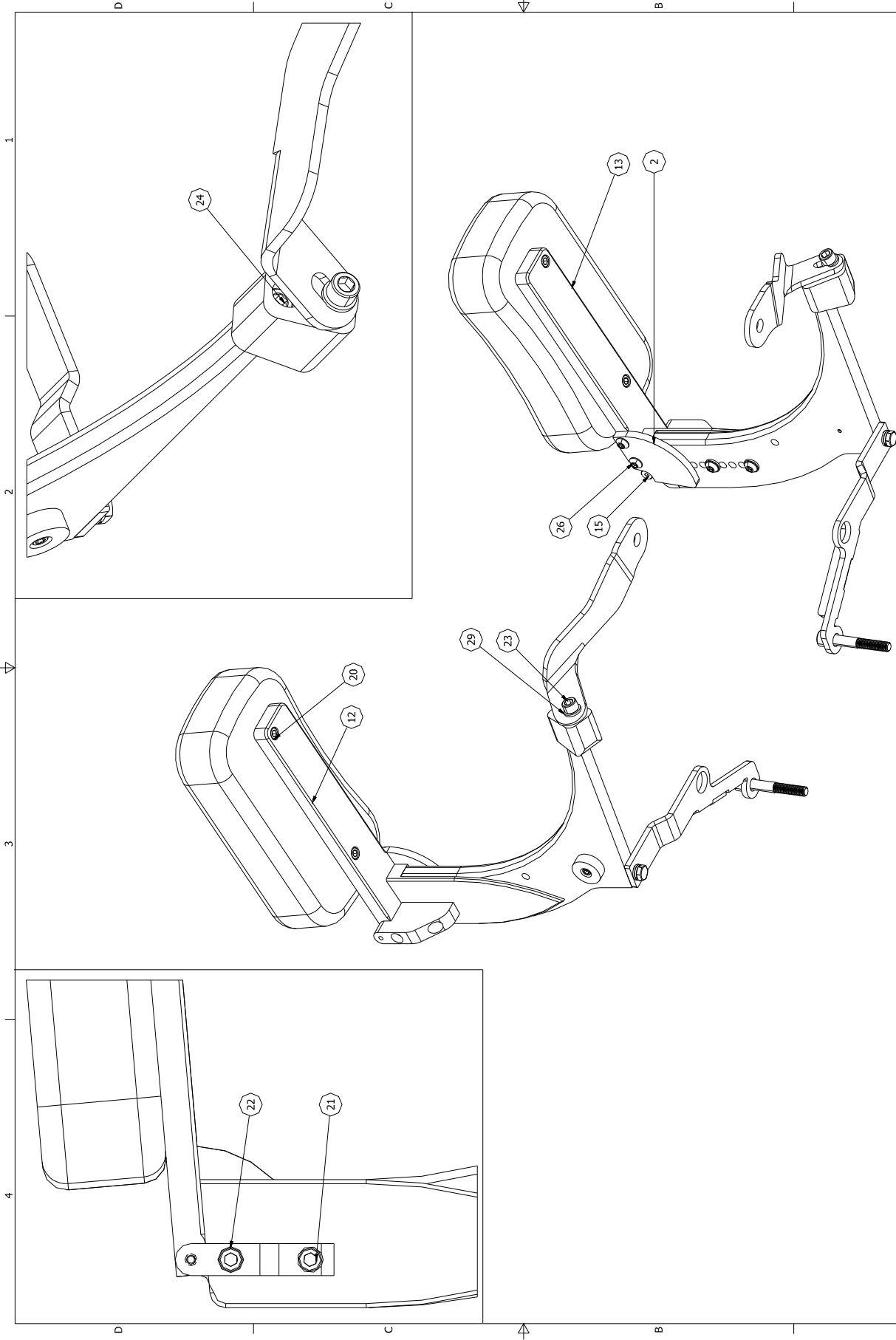
16. Attachment at the front is basically the same except that now you have the saddlebag bracket to go through with the 5/16"-18 SHCS as well.



17. Attachment in the rear is the same.



18. Now go back and complete steps 10 through 12.



A	Industrial Specialty Co. Inc. Proprietary Property				Tolerances		Date		Material		Dimensions		ISCI		INDUSTRIAL SPECIALTY CO. INC.		Revision					
	This drawing is the proprietary property of Industrial Specialty Company, Inc. and must not be reproduced, stored in a retrieval system, or transmitted, in any form or by any means, electronic, mechanical, photocopying, recording, or by any information storage and retrieval system, without the prior written consent of Industrial Specialty Company, Inc. All rights of design and invention are reserved.																		Precision Machine / Engineered Products / Assembly 80 Forest Hills Dr. - P.O. Box 3392 - Montgomery, AL 36108 PH: (334) 277-2224 FX: (334) 277-5846		A	
	Drawing Unit: IN. [mm]				Inches		.xxx ± .005		.xxx ± .01		.xxx ± .02		Finish		Model File # M:34917-1ISPY-ARM (ARM REST)SPY-ARM-ADJ.iam File # M:34917-1ISPY-ARM (ARM REST)SPY-ARM-ADJ.idw							
					Fract.		1/32"		1/16"		R.L.K.		Part #						SPY-ARM-SHORT_RevX			
					Metric		xx ± .13		xx ± .25		xx ± .5		Description						Company			
	Scale: NTS				Angle		± 0-30°		Approx. Weight		Used In Assembly #		Project		ISCI							
	8.79 lbmass												Spyder									

INCLUSIVE IN RELATION TO THE LIABILITY OF ISCI (SELLER).

